

Roca Mines Inc.



'High-grade molybdenum mine with outstanding exploration potential... a true Company-builder'

MAX MOLYBDENUM MINE

Roca's **MAX Molybdenum Mine**, located 60km southeast of Revelstoke, British Columbia is a primary molybdenum ("moly") mine that began commercial production in early 2008.

Molybdenum's key attributes are its ability to bring hardness, high heat strength and corrosion resistance to a variety of applications. Molybdenum is a key alloy in the manufacture of specialty steels, including drilling equipment, pipeline steel and other energy-related steel infrastructure. Molybdenum is used extensively in the automobile, aerospace, construction and shipbuilding industries. Molybdenum is also used as a de-sulphurization catalyst in the production of a variety of greener petroleum products.

- ✓ *High-grade molybdenum resource*
- ✓ *Molybdenite concentrate sales "at mine gate"*
- ✓ *Comprehensive environmental monitoring*
- ✓ *Expansion potential – Phase II Development Underway*
- ✓ *Exploration potential for both "moly" and tungsten*

In the late 1970s and early 1980s, MAX was the subject of significant exploration and engineering work, which was conducted by Newmont Mines Ltd. and Esso Minerals Canada Ltd. As a result of those previous operators' \$15 million efforts, MAX boasts a large production-sized access adit and a comprehensive geological, engineering and environmental database. The well defined, high-grade zones at MAX provided Roca with the foundation for a fast-tracked production opportunity, with the potential to develop into a long-term mine.

FortyTwo Metals Inc. (a wholly-owned subsidiary of Roca Mines Inc.) was granted a production permit in November 2005, and construction at MAX commenced in May 2006. Roca's comprehensive water quality monitoring program has been in place since 2005 and results are sent directly to BC-MOE and Environment Canada verifying



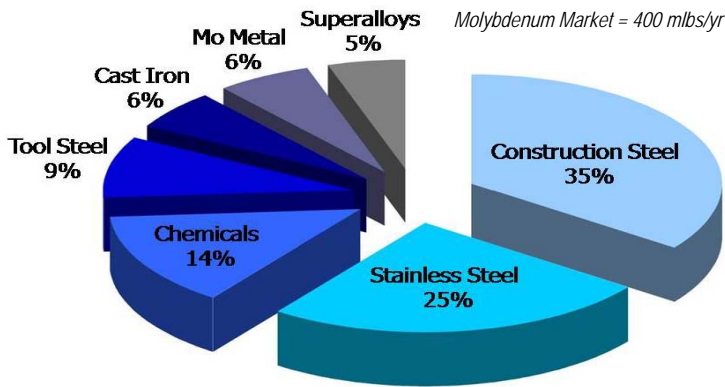
Above - The MAX Mill equipment and buildings



Above - Production drilling on 875 level

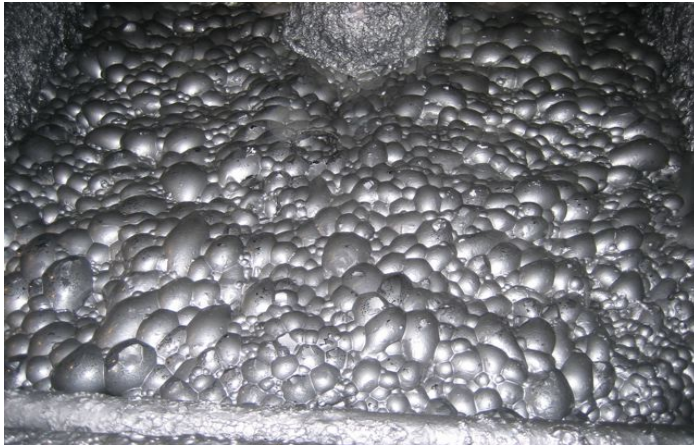


Above - Molybdenum concentrates ready for shipment



Source: IMA

Global Applications for Molybdenum



Above - One of the MAX flotation cells at work producing molybdenite concentrates



Above - Team ROCA awarded the 2008 Scholz Prize for Excellence in Mine Development

Capital Structure

Shares Outstanding = 91.6 million

Fully Diluted Shares = 107.3 million

MAX has an excellent environmental performance record.

Phase I mine production at MAX is focusing on the 43-101 compliant high-grade resource containing 280,000 tonnes grading 1.95% MoS₂, significantly higher grade than almost all other molybdenum projects.

MAX is nearing completion of its Phase II construction to allow for further expansion. MAX has the potential to produce 4–5 million pounds of molybdenum per year into the next decade, if further expansion is made.

The 43-101-compliant measured and indicated resource at MAX contains 42,940,000 tonnes grading 0.20% MoS₂ using a 0.10% MoS₂ cutoff, which equates to in excess of 113 million pounds of contained molybdenum.

Roca plans to recover much of the high-grade resource (1,380,000 tonnes grading 0.94% MoS₂) within the initial 3–4 years of production. With cash costs estimated in the US\$5/lb. range, the company plans to remain one of the world's lowest cost producers.

To the end of the 2009 calendar year, the mine produced approximately 3.9 million lbs of Molybdenum contained in concentrate. Targets for 2010–2014 are 4.4 million lbs per year and 3 million lbs per year to 2017. Future mine phases could see higher rates of production and a longer mine life.

The MAX deposit is open at depth and further drilling to test the extent of and define further mineralization at MAX is a priority for the Company. In addition, there are a number of tungsten zones on the MAX property.

Roca holds a number of exciting exploration projects including; **Nuevo Milenio Gold/ Silver Project** in Mexico, **Foremore VMS+Gold** (located adjacent to NovaGold / Teck Cominco's Galore Creek project) and the **SeaGold** Property, in the same region as Foremore, which is a 50:50 joint venture with Romios Gold.

Please visit our website for more information.



Roca Mines Inc.
ROK.TSX-V

490 - 1122 Mainland Street
Vancouver, BC, V6B 5L1, Canada

Phone: 604.684.2900

Fax: 604.684.2902